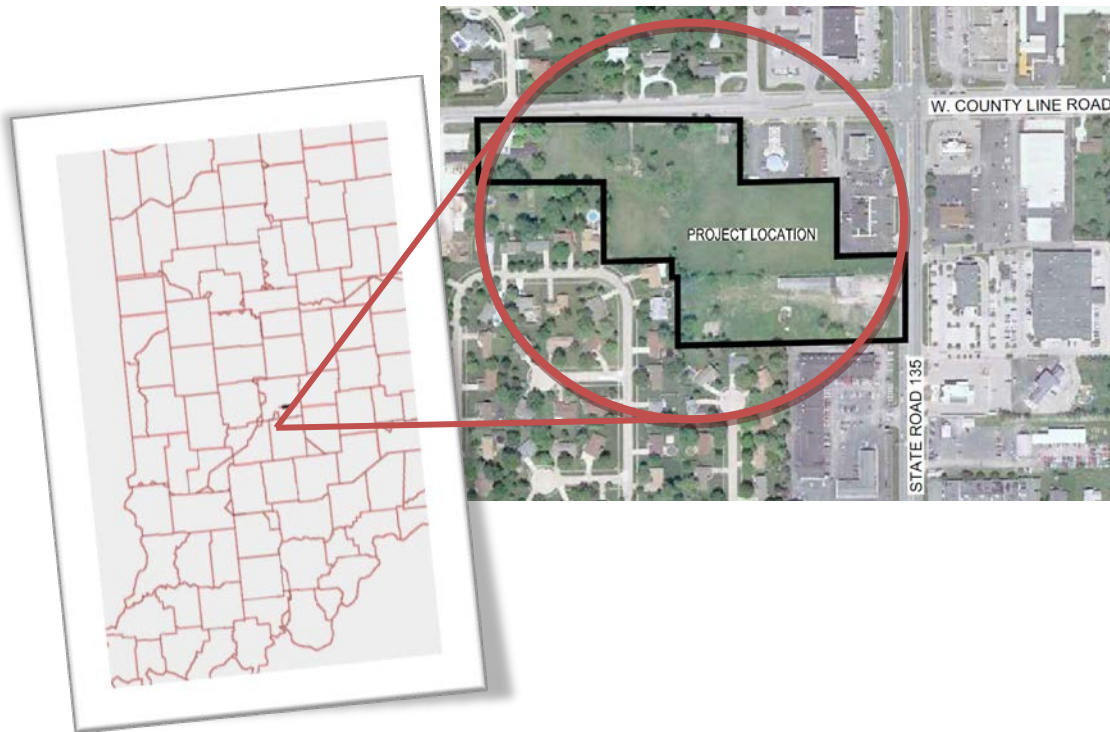


# Greenwood Meadows Nursing Home

SR 135 and West County Line Road  
Greenwood, Indiana



## GREENWOOD MEADOWS NURSING HOME

### Scope:

Development of a nursing home facility, an office building, and out lots in Greenwood, Indiana.

### Services Provided:

Topographic Survey  
Design / Permitting  
INDOT Permitting  
ALTA Survey  
Plat Preparation  
Construction Staking  
and Coordination  
As-Built Survey

### Client:

Basic American  
Industries, Inc.

### Contact:

Andrew Greenwood  
Associate Counsel  
317-783-5461

### Constructed:

Fall 2010 –  
Summer 2011

### Website:

[www.americanscommunities.com/gwm](http://www.americanscommunities.com/gwm)

## Project Highlights

- This project involves the development of a 65,300 sq. ft. nursing home facility and an 8,160 sq. ft. office building in Greenwood, Indiana. The project also includes the platting of seven (7) additional out lots on the overall  $\pm 11.83$  acre parcel.
- Storm water quantity requirements are met with a wet detention pond and restrictive outlet control structure. The detention pond is sized to accommodate an overall watershed that includes the nursing home and office building site, as well as, three (3) adjoining parcels at the intersection of SR 135 and County Line Road.
- Post-construction storm water quality requirements for the development are achieved by the use of an AquaSwirl Model AS-4 Stormwater Quality Unit. As with the detention facility, the water quality unit is sized to accommodate and treat the entire overall watershed.
- The sanitary wastewater facility for the project includes the design of an approximate 1,200 lft 8" gravity main extension that connects to an existing gravity main on the south side of County Line Road.

