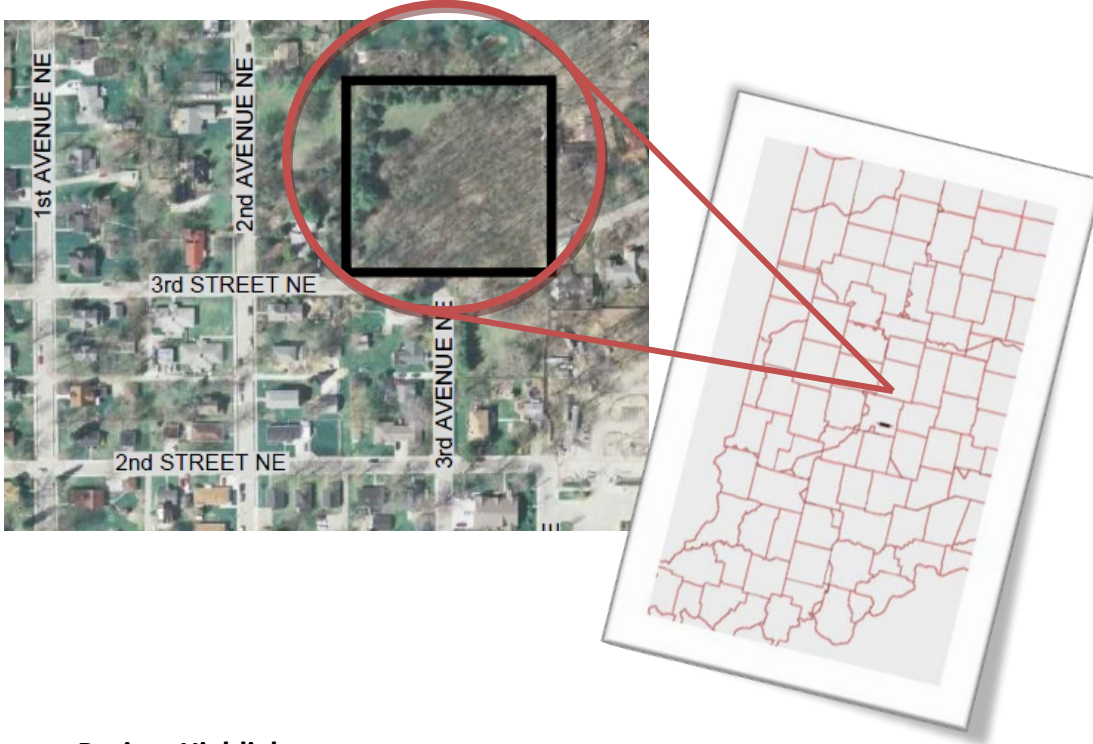


Blackwell Park Subdivision

3rd Avenue NE and 3rd Street NE

Carmel, Indiana



Project Highlights

- This project involved the development of an 8-lot single family residential subdivision with common/detention area in Carmel, Indiana.
- The project included the extension of 3rd Avenue NE into the development, and installation of a cul-de-sac at the north end of 3rd Avenue NE with on-street parking bays along the west side of the road.
- Storm water quantity requirements were met with a dry detention basin and restrictive outlet control structure. The dry detention basin was sized to accommodate the storm water runoff from the entire 2.21 acre development, along with a 1.43 acre offsite area. The detention facility was designed to minimize disturbance to the existing depressional storage area and maximize tree preservation on the site.
- Post-construction storm water quality requirements for the development are achieved by the use of the dry detention basin containing natural foliage along with prairie grasses and wet habitat plantings, and with a series of grass lined filter strips. The grass lined filter strips are located between all lots within the subdivision, and provide pre-treatment sediment filtration before reaching the dry detention basin.
- The sanitary wastewater facility for the project includes the design of an approximate 383 lft 8" gravity main extension that connects to an existing gravity main northeast of the 3rd Avenue NE and 3rd Street NE intersection.



BLACKWELL PARK SUBDIVISION

Scope:

Development of an 8-lot single family residential subdivision in Carmel, Indiana.

Services Provided:

Topographic Survey
Design / Permitting
Plat Preparation
Construction Staking
and Coordination
As-Built Survey

Client:

Blackwell Park
Development
Partners, LLC

Contact:

Justin Moffett
Member
317-966-2023

Constructed:

Summer 2010

Website:

www.blackwellpark.com